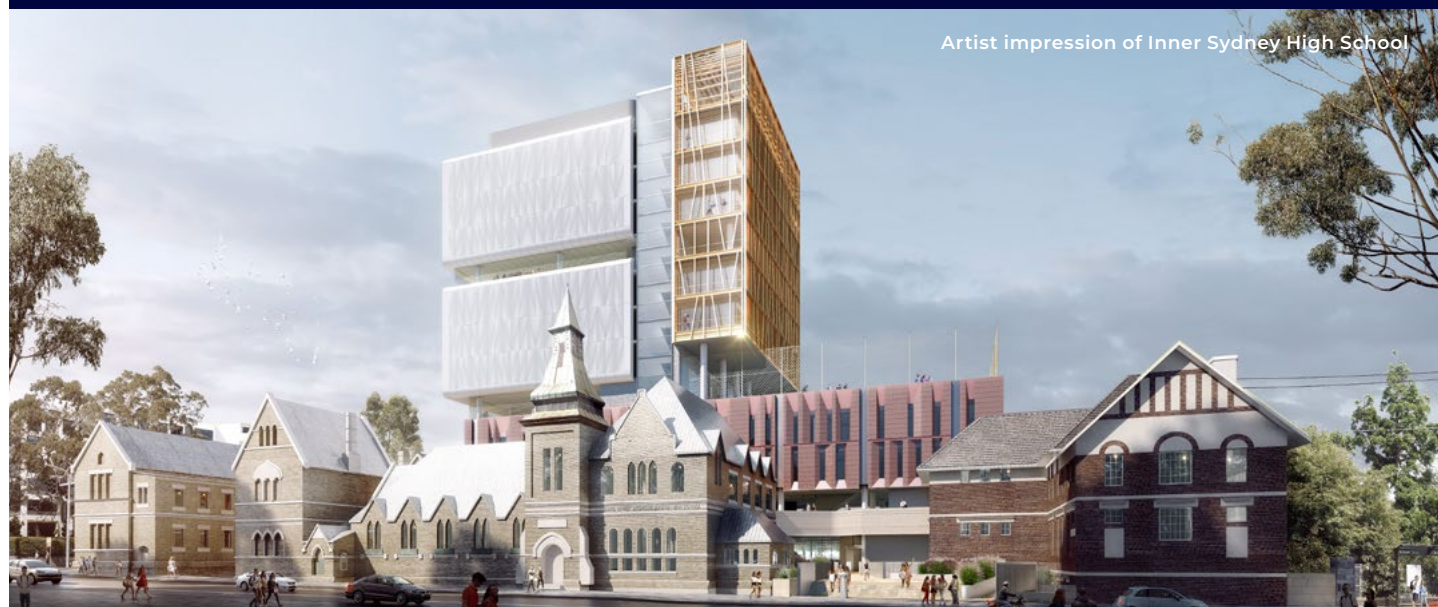


Inner Sydney High School

Newsletter

December 2018



Artist impression of Inner Sydney High School

Project overview

The NSW Government is investing \$6 billion over the next four years to deliver more than 170 new and upgraded schools to support communities across NSW. In addition, a record \$847 million is being spent on school maintenance over four years. This is the largest investment in public education infrastructure in the history of NSW.

An exciting project is underway to construct the new Inner Sydney High School on the corner of Cleveland Street and Chalmers Street in Surry Hills. This new school will be a comprehensive high school focused on new and innovative ways of teaching and learning with an emphasis on technology, mobility and flexibility.

Enrolments for Term 1, 2020 will start as a staged approach to school operations with Year 7 students. Once all buildings are completed, the school will support up to 1,200 students across Years 7 – 12 over 14 storeys. This will include:

- 47 permanent adaptable learning spaces
- Multiple sporting and recreational spaces and shared use of Prince Alfred Park
- 5 'STEAM' focused floors including music, food technology and visual arts facilities

Principal appointment – Robyn Matthews



We are pleased to announce that following a rigorous and extensive merit selection process the Principal for the new Inner Sydney High School has been appointed. For the

past six years Robyn has been Principal of South Sydney High School and prior to that was Deputy Principal of Sydney Secondary College (Balmain Campus). Robyn has also held roles at the Curriculum and Learning Innovation Centre and the NSW Curriculum Directorate.

Robyn is committed to promoting positive relationships between staff, students and the community and is passionate about public education. She is looking forward to the opportunity to be part of the flagship school's next exciting chapter.

School catchment

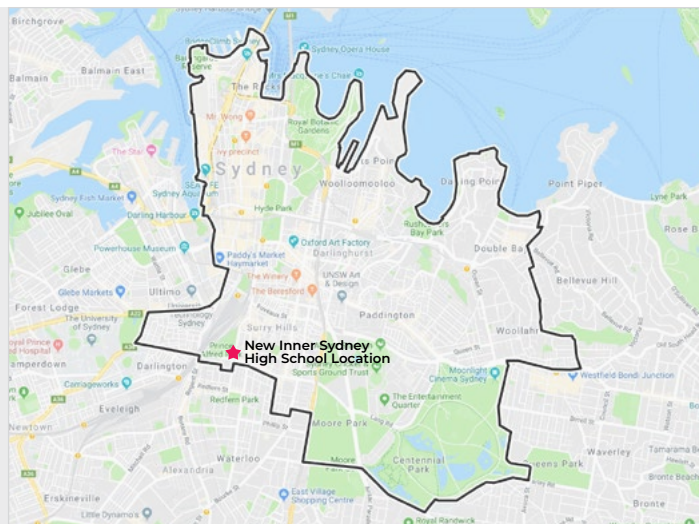
Using demographic advice regarding projected enrolments in the inner Sydney area and following consultation with local primary and high school principals, the catchment for Inner Sydney High School has now been confirmed by the NSW Department of Education.

The department's standard process for enrolments in public secondary schools will apply for Year 7 enrolments into Inner Sydney High School for 2020. Refer to the map at right for the catchment boundaries.

For a closer look at the catchment go to the website at:

<https://www.schoolinfrastructure.nsw.gov.au/projects/i/inner-sydney-high-school.html>

As per regular departmental practice the boundaries will be reviewed from time to time.



How to enrol

Inner Sydney High School will be accepting enrolments for Year 7 that will begin Day One Term One for the 2020 school year.

Enrolments at Inner Sydney High School will be undertaken in accordance with the NSW Department of Education's guidelines. A student is able to enrol at Inner Sydney High School if their permanent and principal place of residence is located within the school's designated catchment area.

Primary schools will receive enrolment information for their Year 6 students in March 2019 as part of the normal enrolment process.

The Principal Robyn Matthews will be in contact with partner primary schools in early 2019.

Frequently asked questions

How was the catchment determined?

The catchment was determined following consultation with primary and high school principals and demographers who analysed projected enrolments in the inner Sydney area.

Why is the Inner Sydney High School only accepting Year 7 enrolments for 2020?

A staged approach to school operations will begin with Year 7 students in 2020. They will be accommodated in the refurbished heritage buildings along Chalmers Street while the completion of the project continues during 2020. This will provide time to start to develop the school culture and to establish systems and processes in consultation with key stakeholders to reflect the school's growing identity.

What if I don't live in the catchment but still want my Year 7 child to attend Inner Sydney High School in 2020?

The standard process will apply for requests for out-of-area enrolments in accordance with the department's enrolment policy. Please contact the school via email in 2019 if you wish to make application for an out-of-area enrolment for Year 7 for 2020.

What happens if I currently have a child enrolled in my previous in-area school and I want to enrol another child in the same school which is now deemed out-of-area?

There will be a transition period of three years where students that have a sibling in the current in-area school can still be enrolled in the same school. After this time, such enrolments will be considered as out-of-area with requests managed in line with the department's policy and each school's enrolment policy.

Will it be a selective or a comprehensive Year 7 to 12 co-educational high school?

Inner Sydney High School will be a comprehensive Year 7 to 12 co-educational high school.

Website



Stay up to date by visiting the School Infrastructure NSW website <https://www.schoolinfrastructure.nsw.gov.au/projects/i/inner-sydney-high-school.html>

Email



- Contact the school regarding enrolment innersydneyhighschool@det.nsw.edu.au
- Contact School Infrastructure NSW regarding the project schoolinfrastructure@det.nsw.edu.au

Phone



- For project related enquiries contact School Infrastructure NSW during business hours on **1300 482 651**
- For enrolment related enquiries contact the school on **0448 710 536**